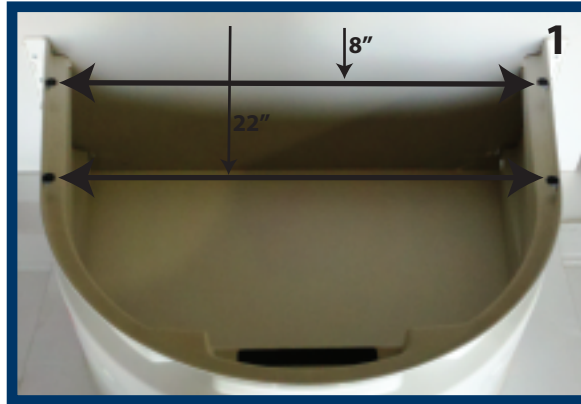


**Hardware Included:**

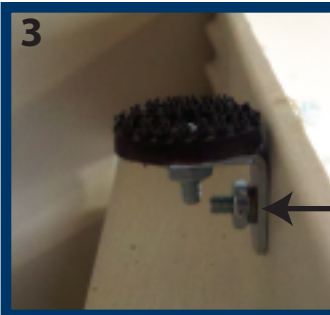
-  4 - 3/4" L-Bracket
-  4 - Dual-Lock™ Disc
-  4 - Dual-Lock™ Pad
-  8 - 3/4" Screw
-  4 - Washer
-  8 - Lock-Washer
-  8 - Nut



- 1. You will be installing 4 Dual-Lock discs to your well and cover:**
- Both on the inside of the well
  - Two 8" from the foundation
  - Two 22" from the foundation
- (Image 1)

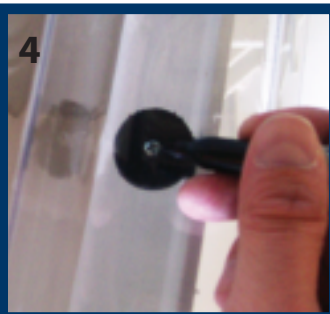


- 2. Use a marker and mark all four locations to drill. (Image 2)**  
**Make sure your hole is a 1/2" below the top lip of the well.**  
**This ensures the attachment hardware will be flush with the top lip. (Image 3)**

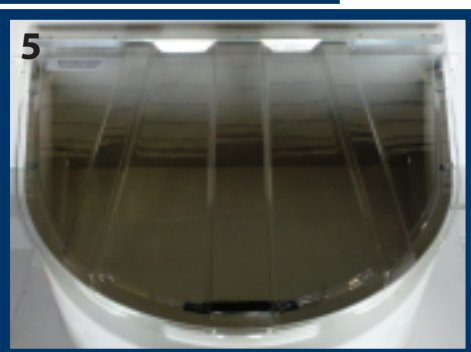


- 3. Attach the L-bracket to the well using a screw, washer, lock-washer, and nut.**  
**Attach the Dual-Lock disc to the top of the bracket using a screw, lock-washer, and a nut.**

← Ensure you have the lock-washer on the inside of the well.



- 4. Place your cover over the well. Use a marker to mark the location of the Dual-Lock disc. You will use this mark to attach the corresponding Dual-Lock pad to the underside of your cover.**



- 5. Once you have attached all four self-adhesive Dual-Lock pads to the underside of your cover place the cover over your well. Line up the Dual-Lock's and press down to secure the cover.**

**\*NOTE: Cover must be at room temperature for adhesive to adhere properly\***

**CLEANING: Window well covers may be cleaned with a mild solution of window cleaner and a soft cloth. Do Not Use of harsh chemicals and scouring powders. For paint splatters use ALCOHOL ONLY. No paint thinners or solvents!**