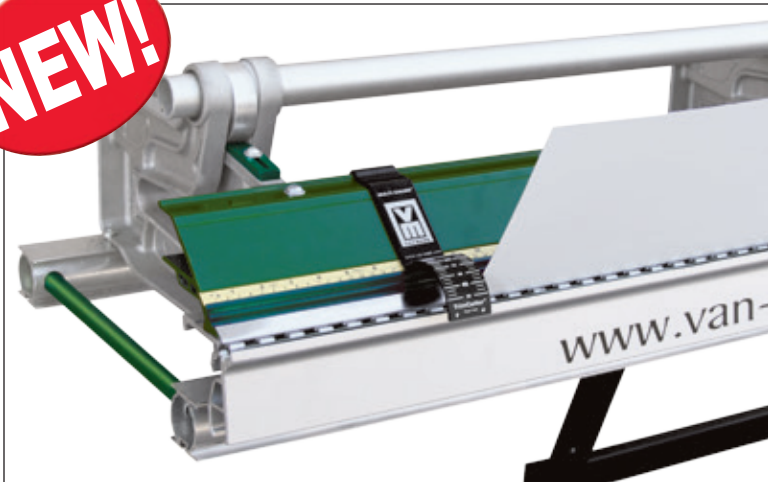




Multi Gauge™ Angle & TrimCutter™ Guide

NEW!



Assist in determining angle



Assist lining up TrimCutter™ cut-off point

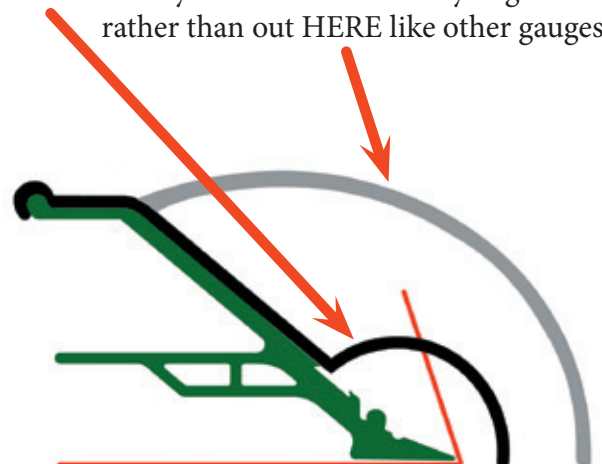


Gauge radius is positioned closer to the bend for easier sighting on material

Van Mark introduces the “Multi Gauge™” Designed to make your job easier by assisting with determining both the angle of the metal being bent and lining up your TrimCutter™ Cut-Off Point.

- Multi Gauge™ (PN 3978) includes a set of **two** gauges
- Easy to read protractors show your bend angles
- Also measures cut-off point for TrimCutter™
- No need to buy multiple angle and cut-off gauges
- Quickly position anywhere along your Mark Series™, TrimMaster® or Metal Master® brakes
- Automatically slides up and down when making full over-bends

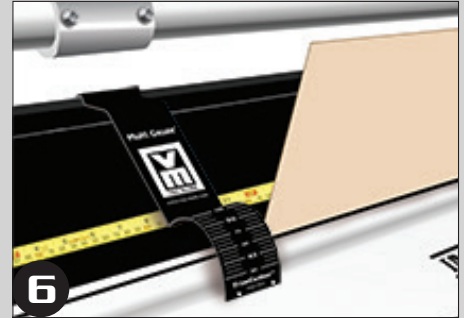
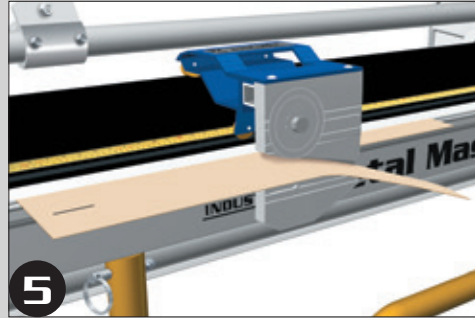
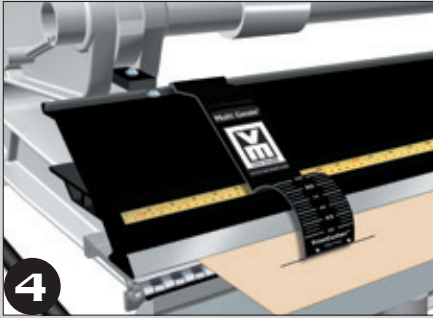
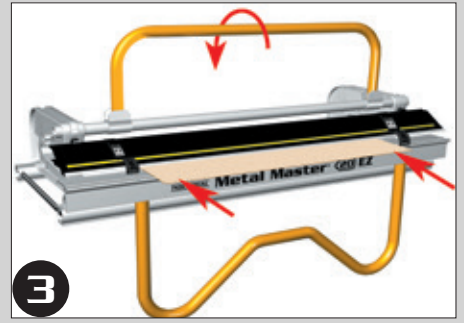
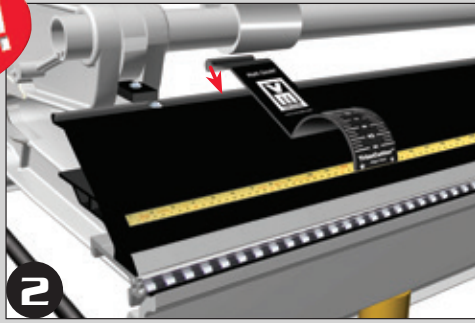
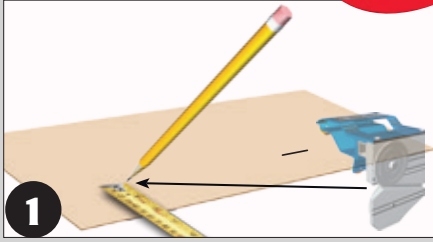
Van Mark's Multi Gauge™ is positioned **HERE** near your material for easy alignment, rather than out **HERE** like other gauges.





NEW!

Multi Gauge™ Angle & TrimCutter™ User Guide



NEW! Multi Gauge™ works with these Van Mark brakes



Mark II™ TrimMaster®



Metal Master® 20



Industrial Metal Master® 20 EZ



Mark I Series™



Mark IV Industrial TrimMaster®



TrimCutter™ 3017

Sold Separately

Works on brakes pictured at left

Other great time & money saving accessories from Van Mark Products



UniStand EZ-Go™

USA1EZ



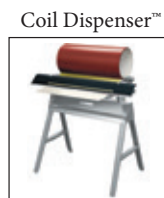
UniStand Adjustable™

USA1



TrimFormer™

3015



Coil Dispenser™

CD24



UniLegs™

UNL1



NailHawg™

NH25

More great time & money saving tools from Van Mark Products



Trim-A-Table™ TAT60

TAT60



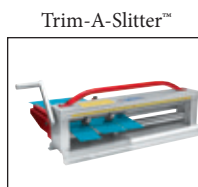
Trim-A-Table™ TAT50

TAT50



Trim-A-Gutter™

TAG50



Trim-A-Slitter™

S24B



Trim-A-Slitter Industrial™

S48CB



Industrial Slitter Combo™

SCI48HD

